

紙模型

日翼者

尺寸 - D350 x W800 x H450mm

整份材料包需要19張紙(A4)

The logo for Horizon Forbidden West is centered on a white rectangular background. The word "HORIZON" is written in a stylized, blocky font with horizontal lines through the letters. Below it, the words "FORBIDDEN WEST" are written in a smaller, simpler font. The entire logo is set against a black background that has a large, white, irregular shape cut out of it, resembling a piece of paper or a map.

本產品由 真言文創企業有限公司 設計製造

©2022 Sony Interactive Entertainment Europe. Developed by Guerrilla.

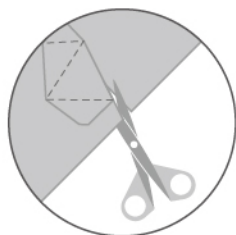
Horizon Forbidden West is a trademark of Sony Interactive Entertainment LLC.

建議印刷紙張

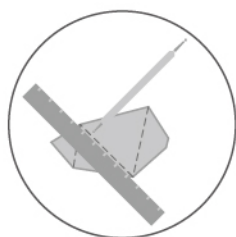
官方成品使用約235g之厚紙印刷

可至便利商店選用A4特殊紙(160g)或文具店180g以上之厚紙印刷

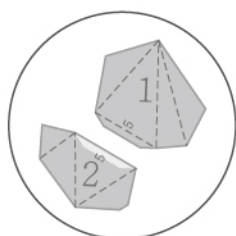
列印時請選擇雙面印刷，長邊翻轉，彩色列印



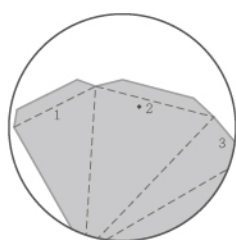
1.沿黑色實線剪裁形狀



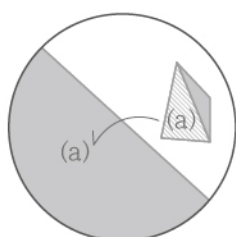
2.使用壓線筆(或美工刀背)劃壓虛線部分



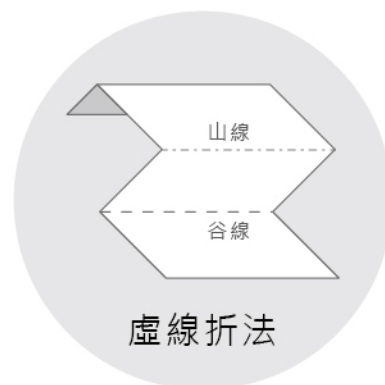
3.按照零件編號(大數字)依序黏貼或插入，
並將小數字所對應的邊相黏(不須按照數字順序)



4.建議從有標記 “.” 的邊開始塗膠，方便後續操作。



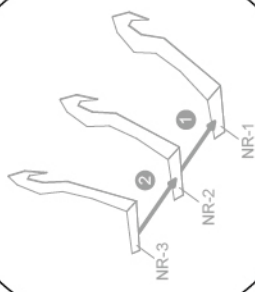
5.額外的配件各自組好後，對應本體相同的編號，
按照黏貼位置黏貼或插入



'R' = right side
'L' = left side

NR/NL

EX:NR



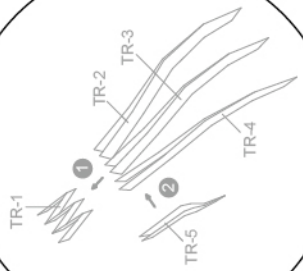
WR/WL

EX:WR



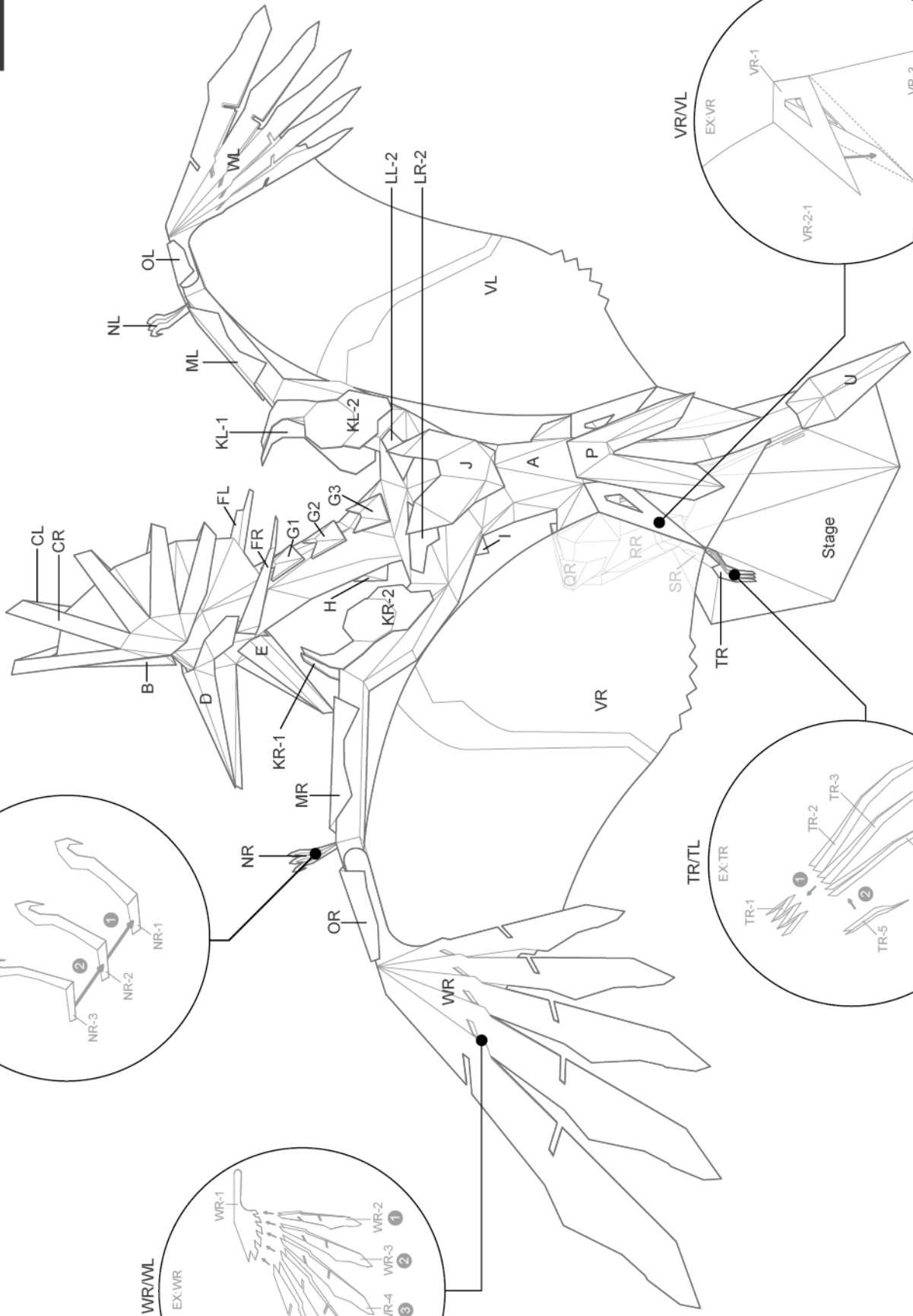
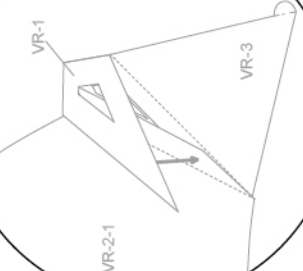
TR/TL

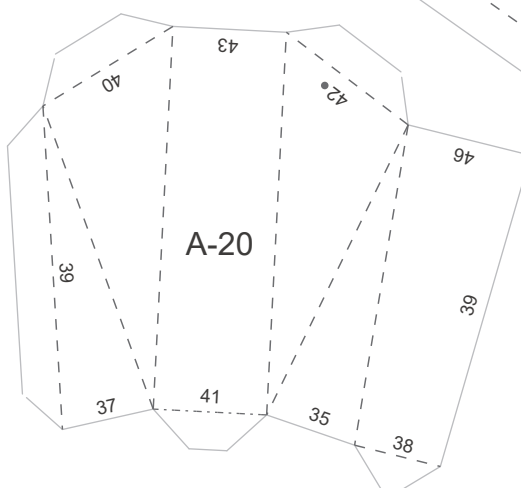
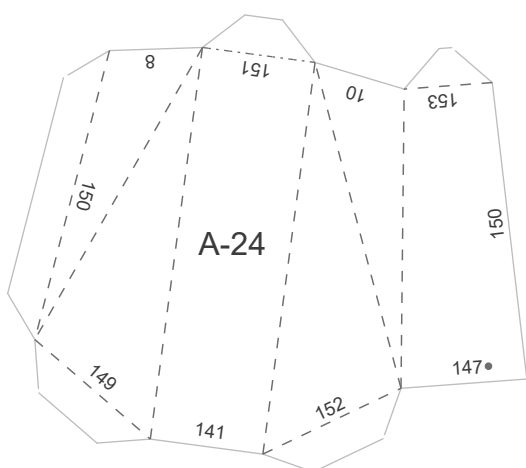
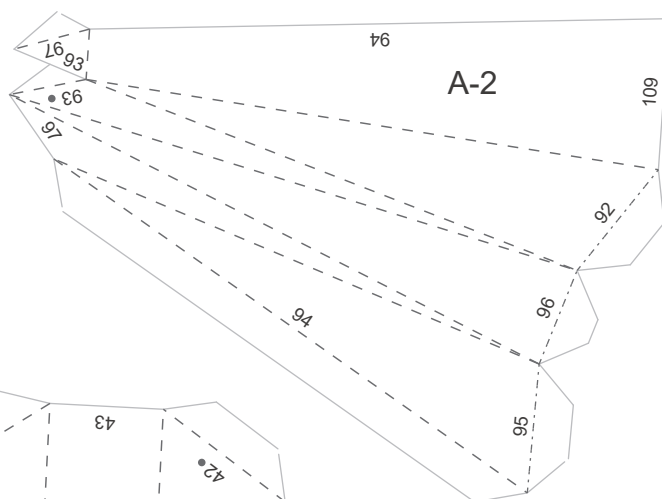
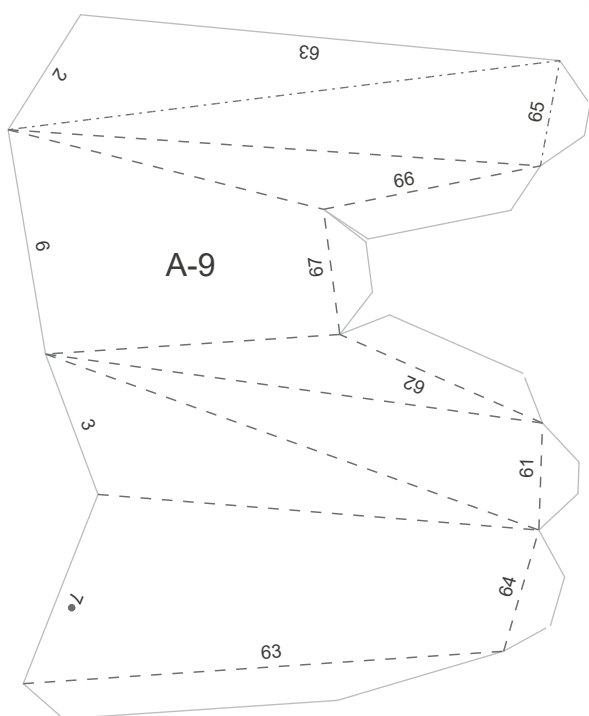
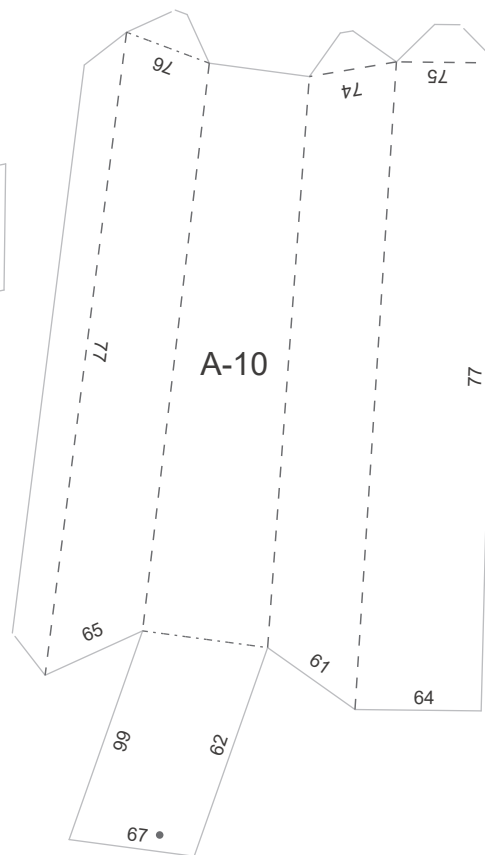
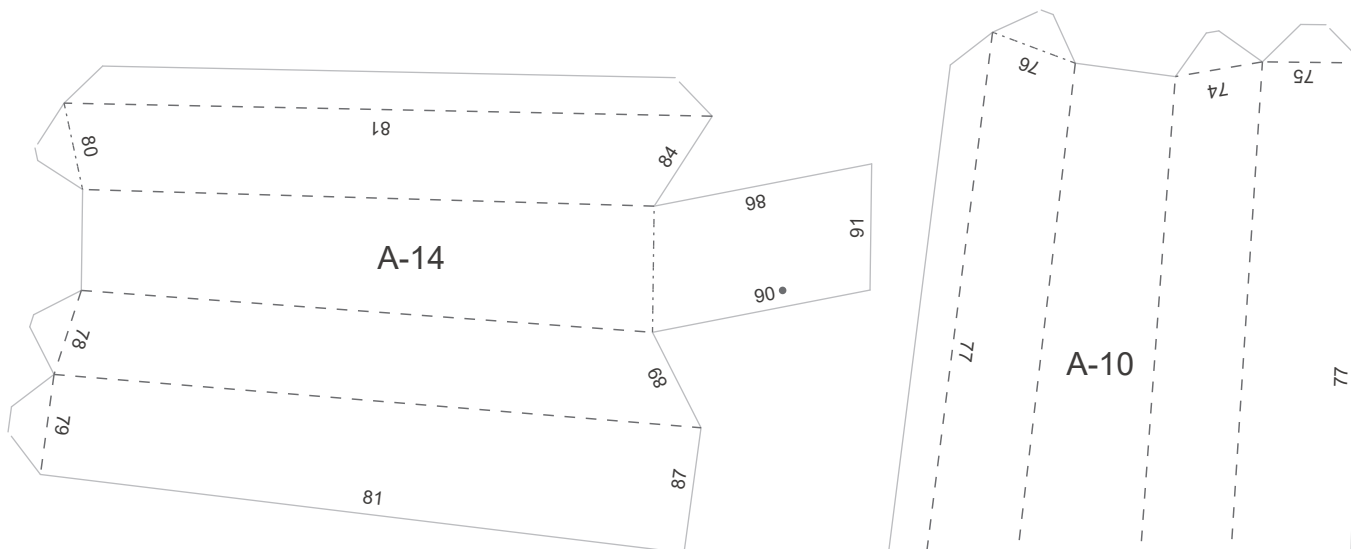
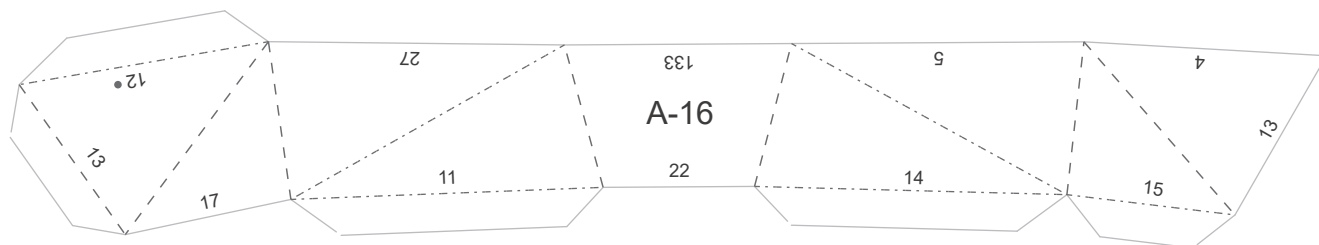
EX:TR



VR/VL

EX:VR





(J)

(J)

(NL)

(ML)

(MR)

(NR)

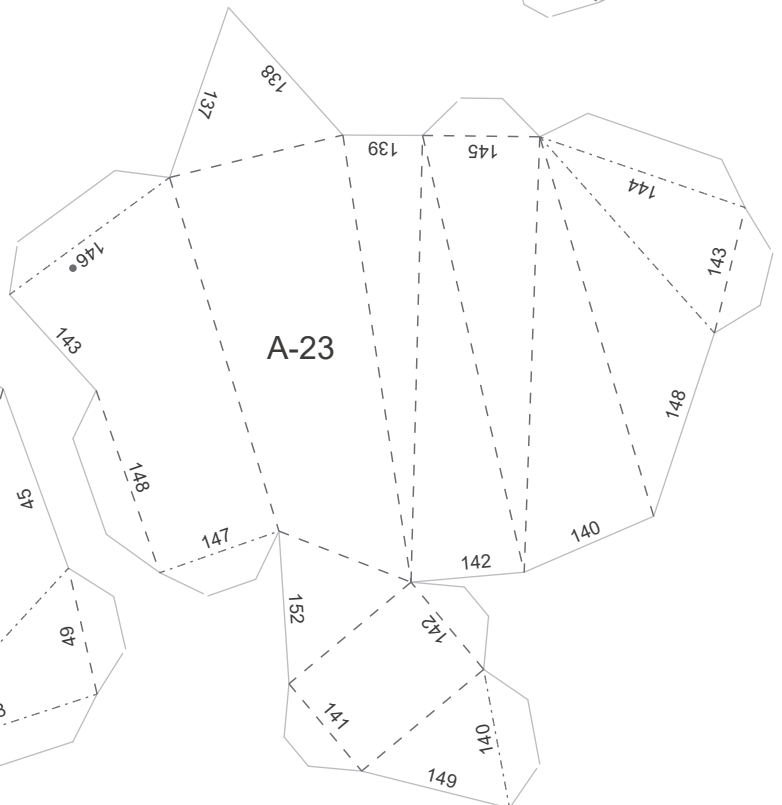
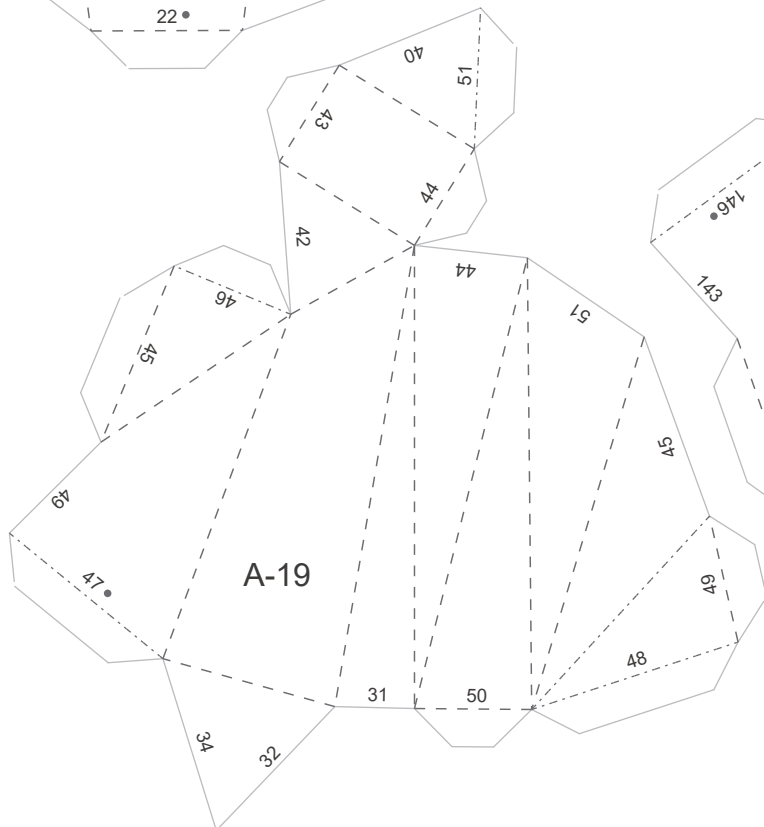
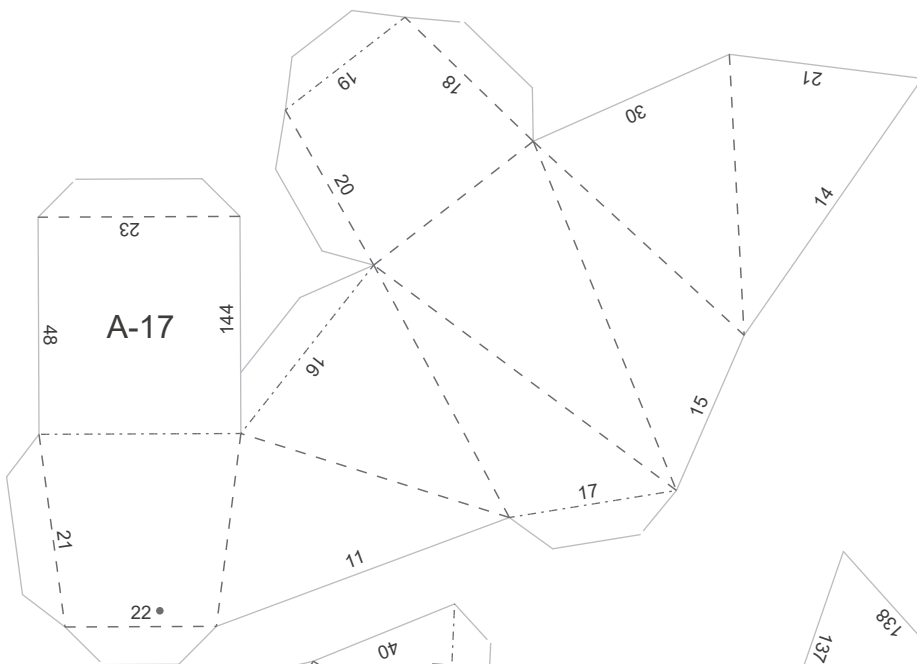
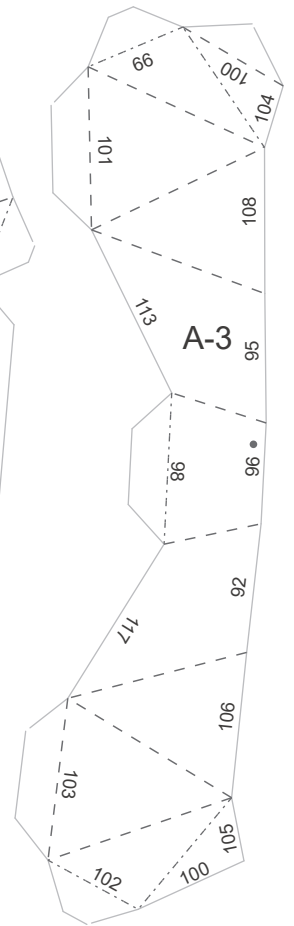
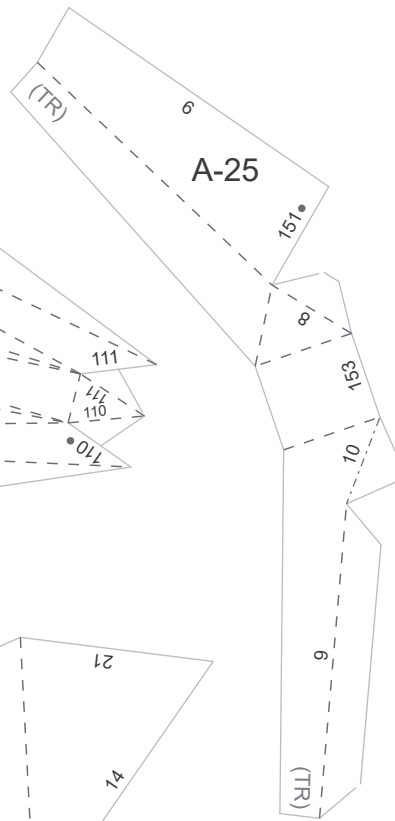
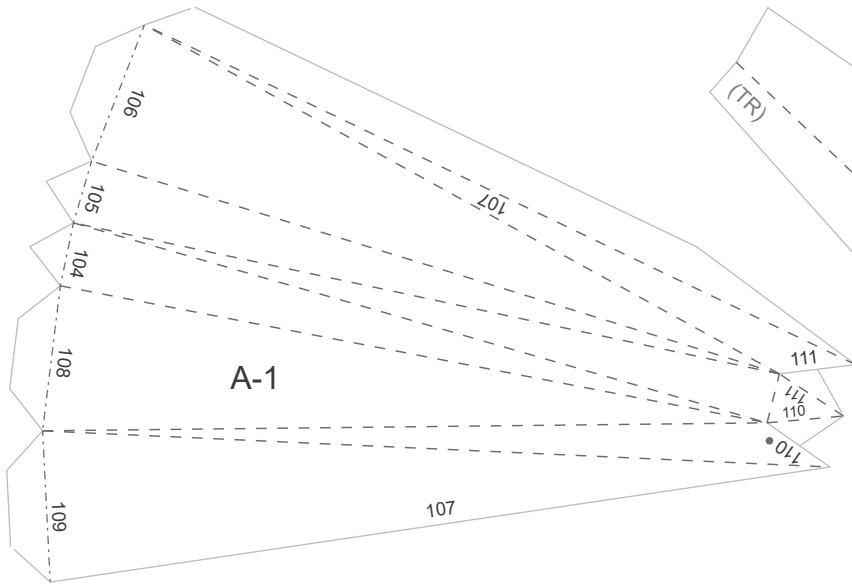
(KL-1)

(KL-2)

(E)

(RR)

(RL)



(S)

(D)

(Q)

(10)

(QR)



(LR-2)

(LL-2)

(LR-1)

(FR)

(LL-1)

(FL)

(VR-1)

(OL)

(WL)

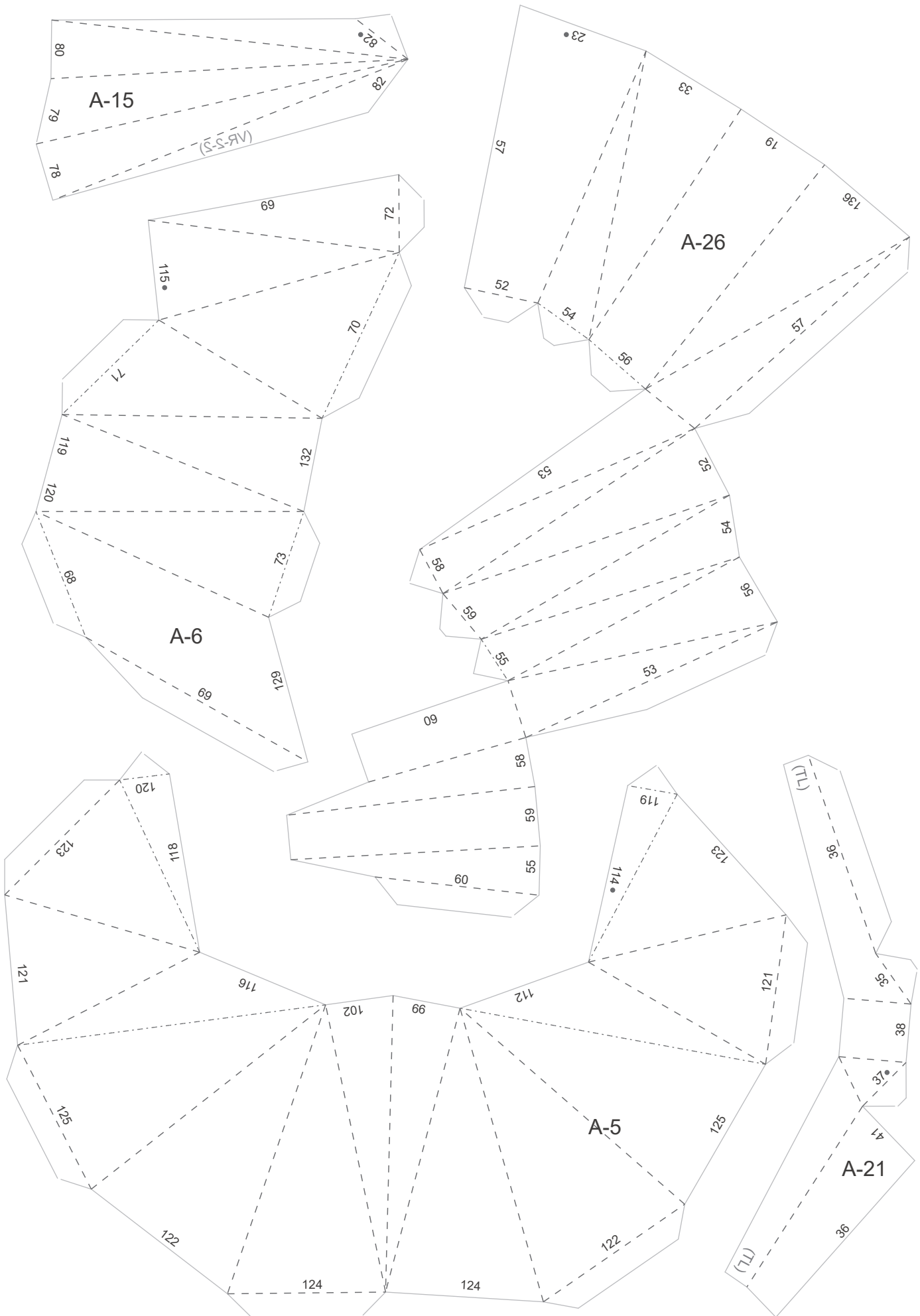
(G3)

(KR-2)

(VL-1)

②

(KR-1)



(OR)

(WR)

(H)

(G1)

(G2)

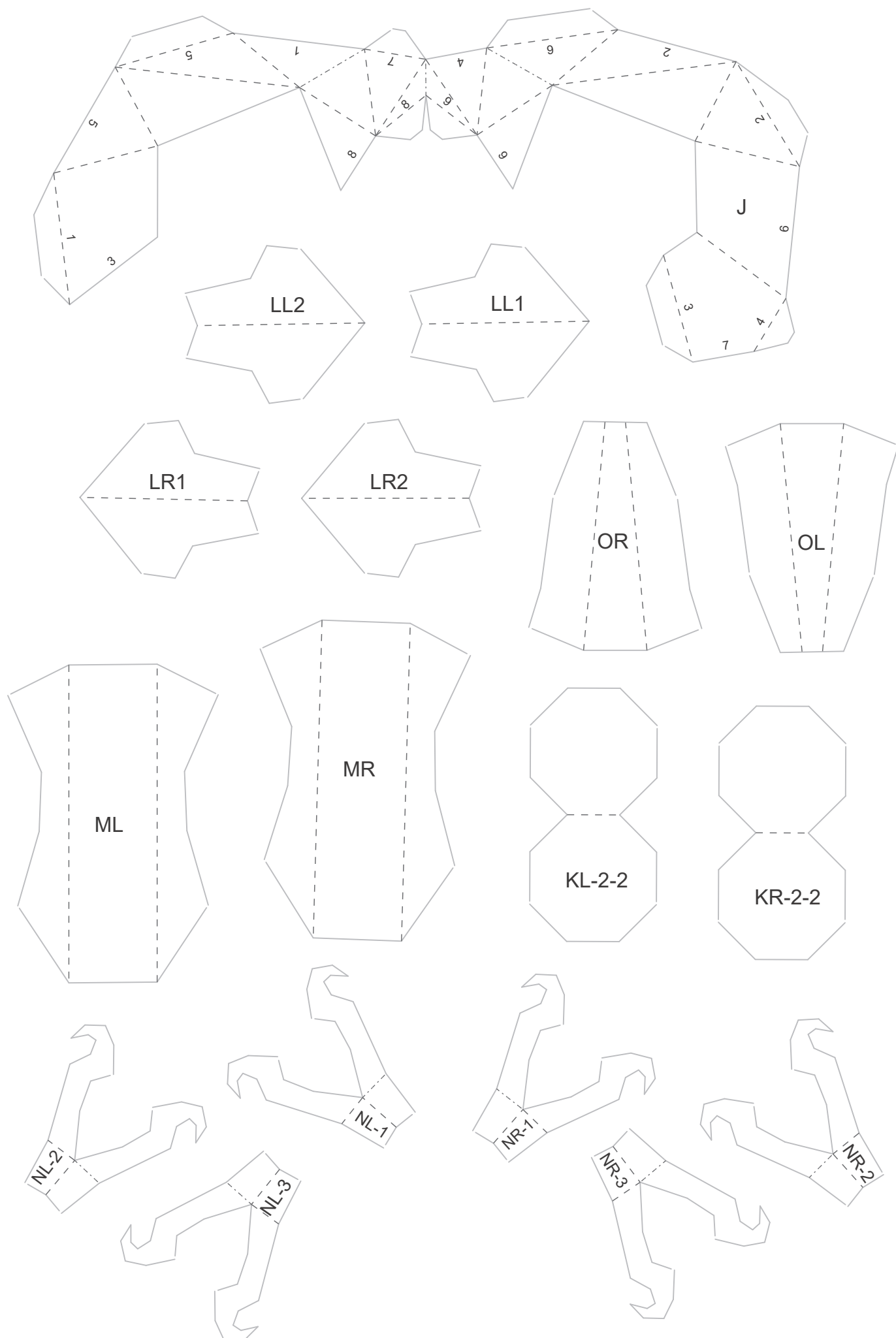
(U)

(CL)

(B)

(CR)

(TS)



LL2

LL1

LR2

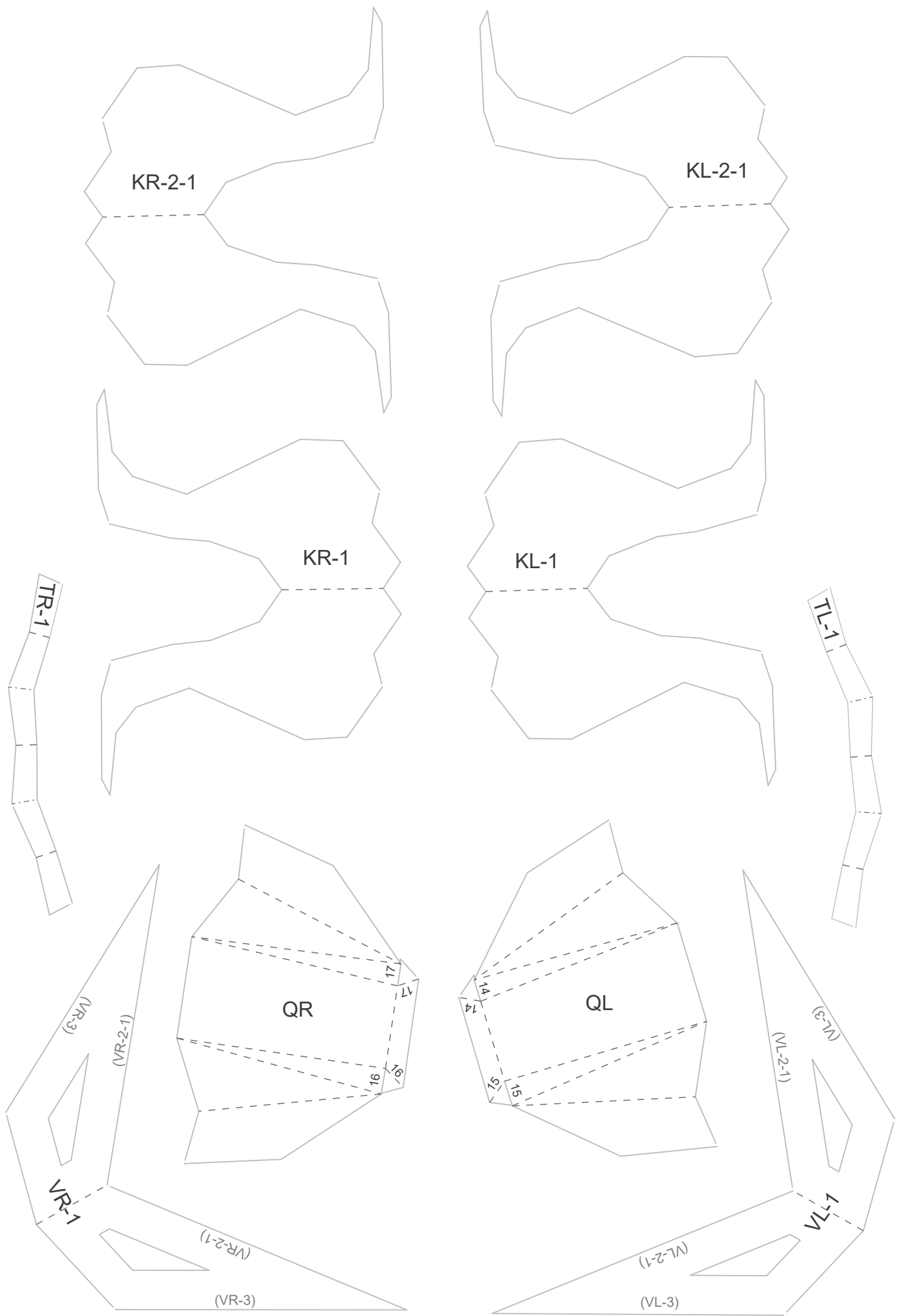
LR1

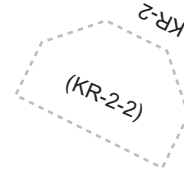
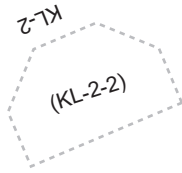
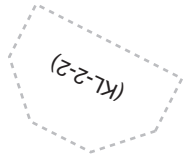
(NR-3)

(NR-2)
NR

(NL-2)
NL

(NL-3)





(TL-2)

KL-1

KR-1

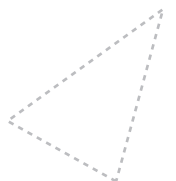
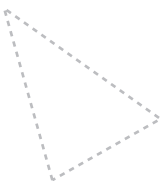
(TR-2)

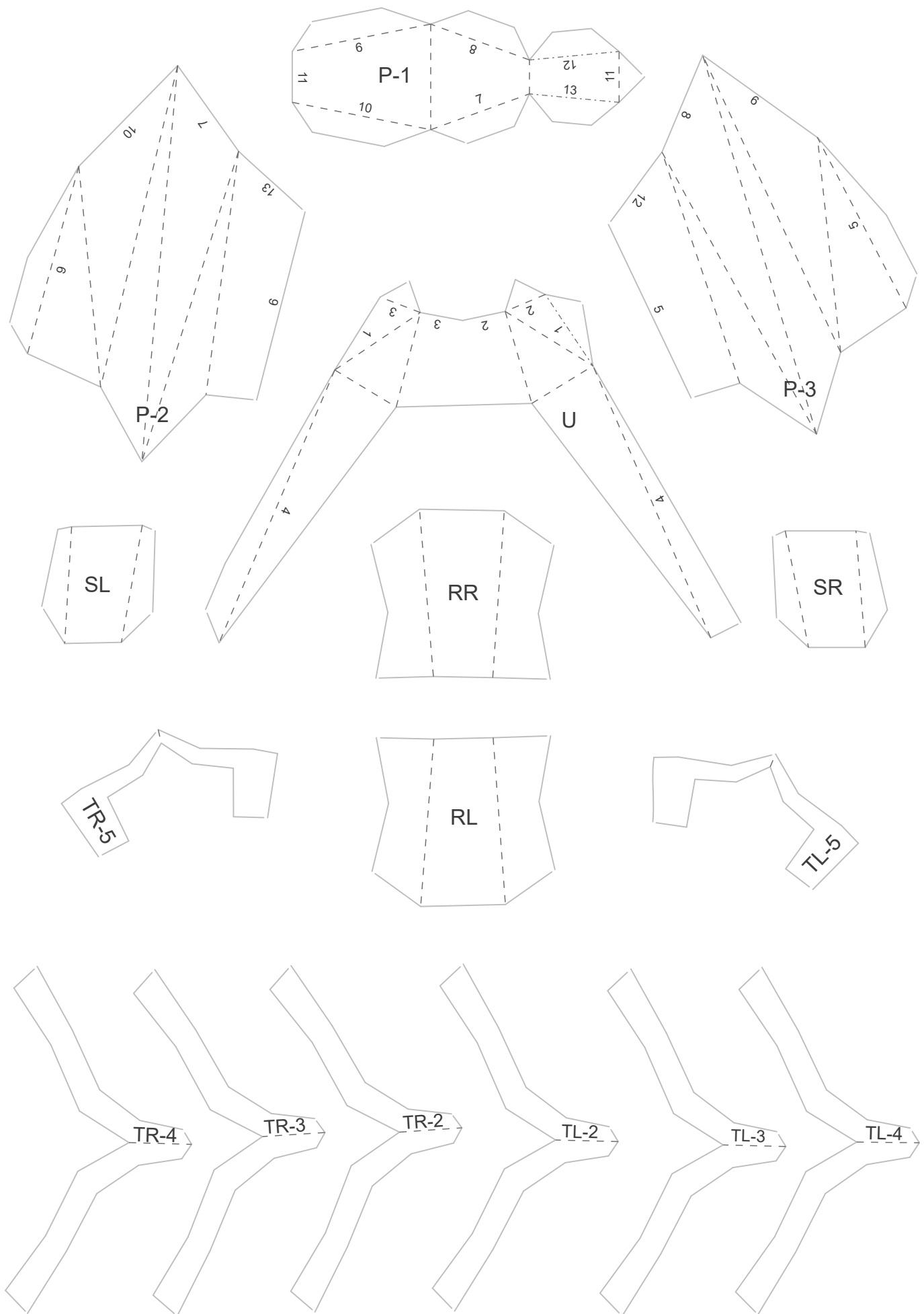
(TL-3)

(TR-3)

(TL-4)

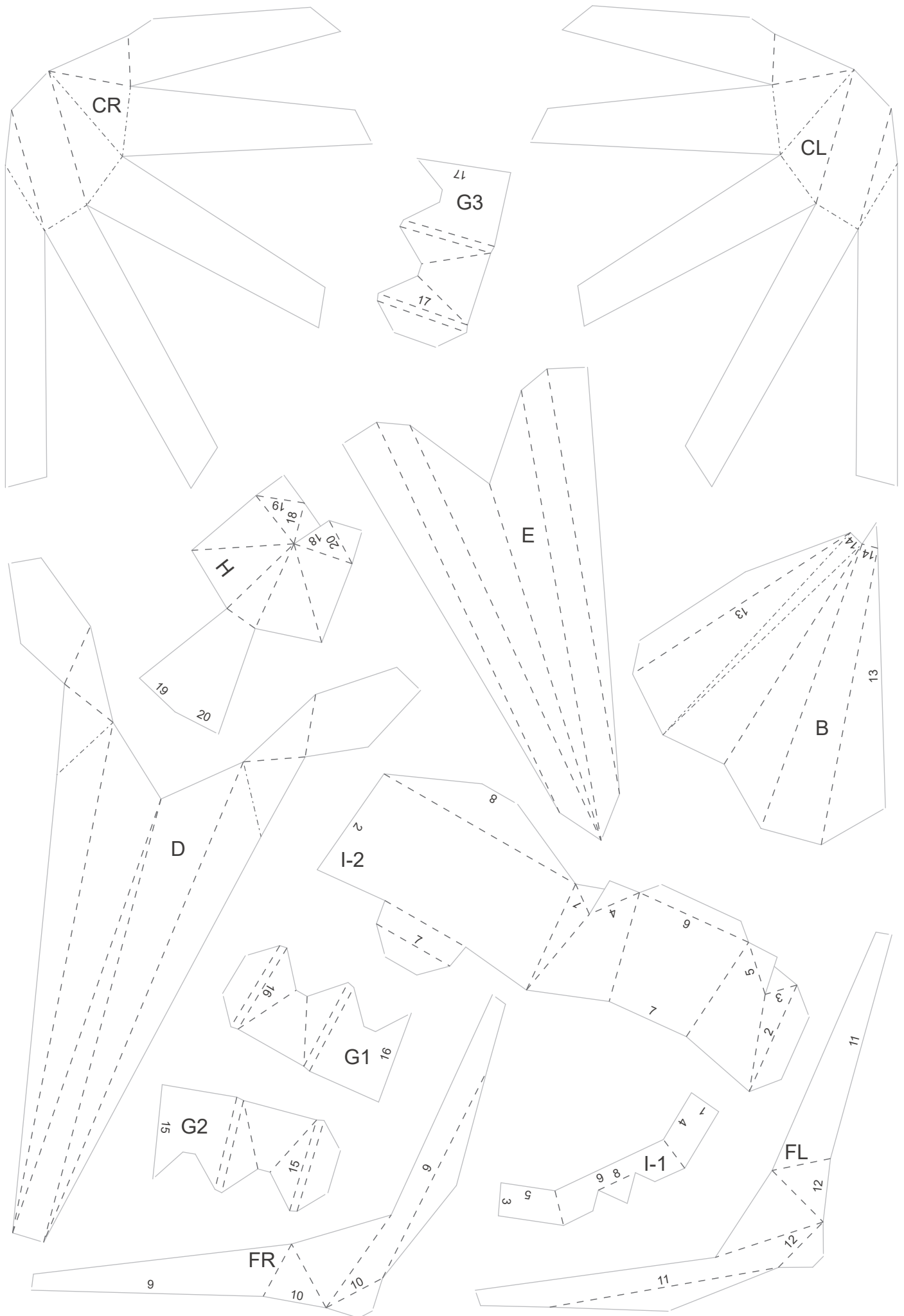
(TR-4)

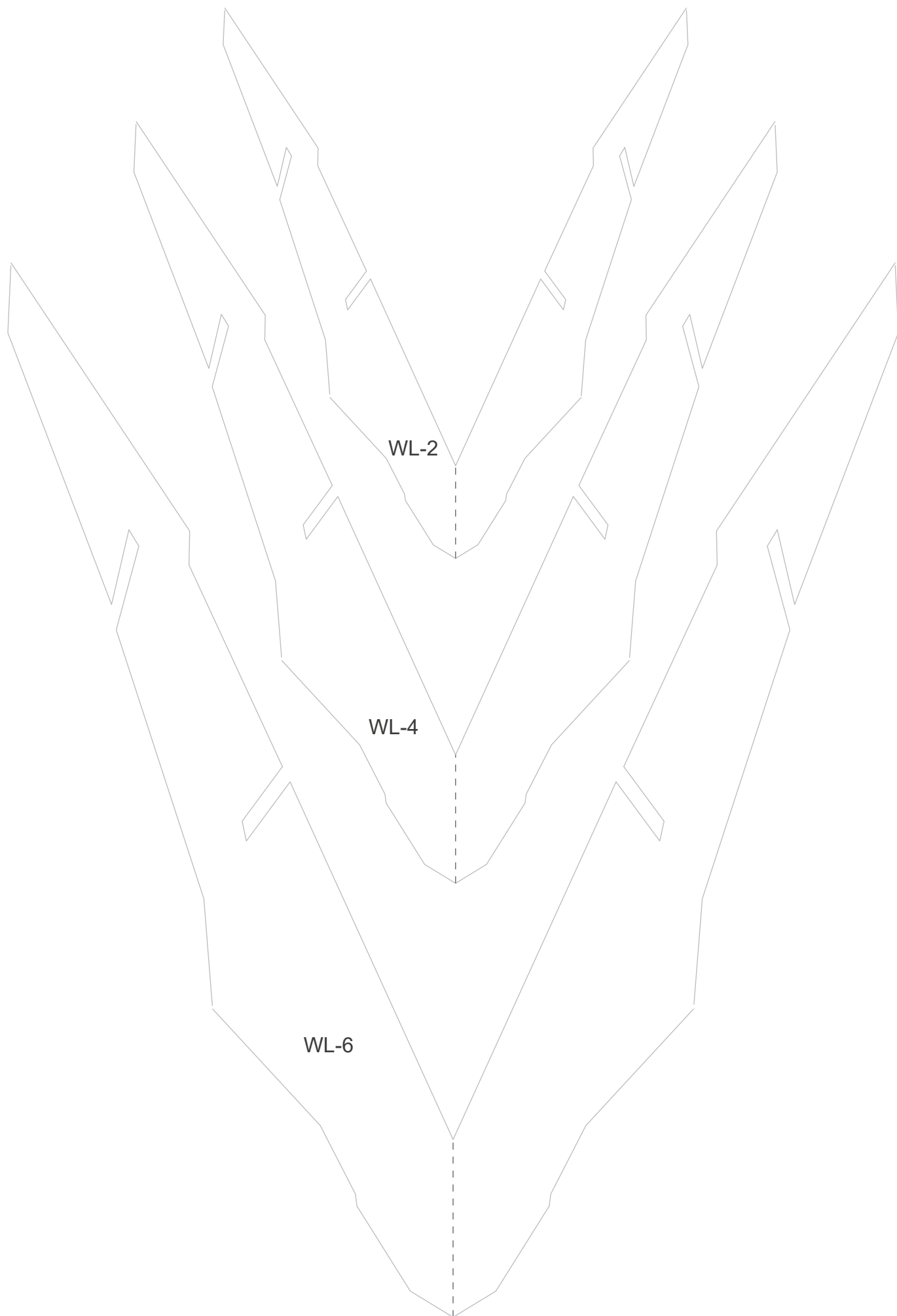


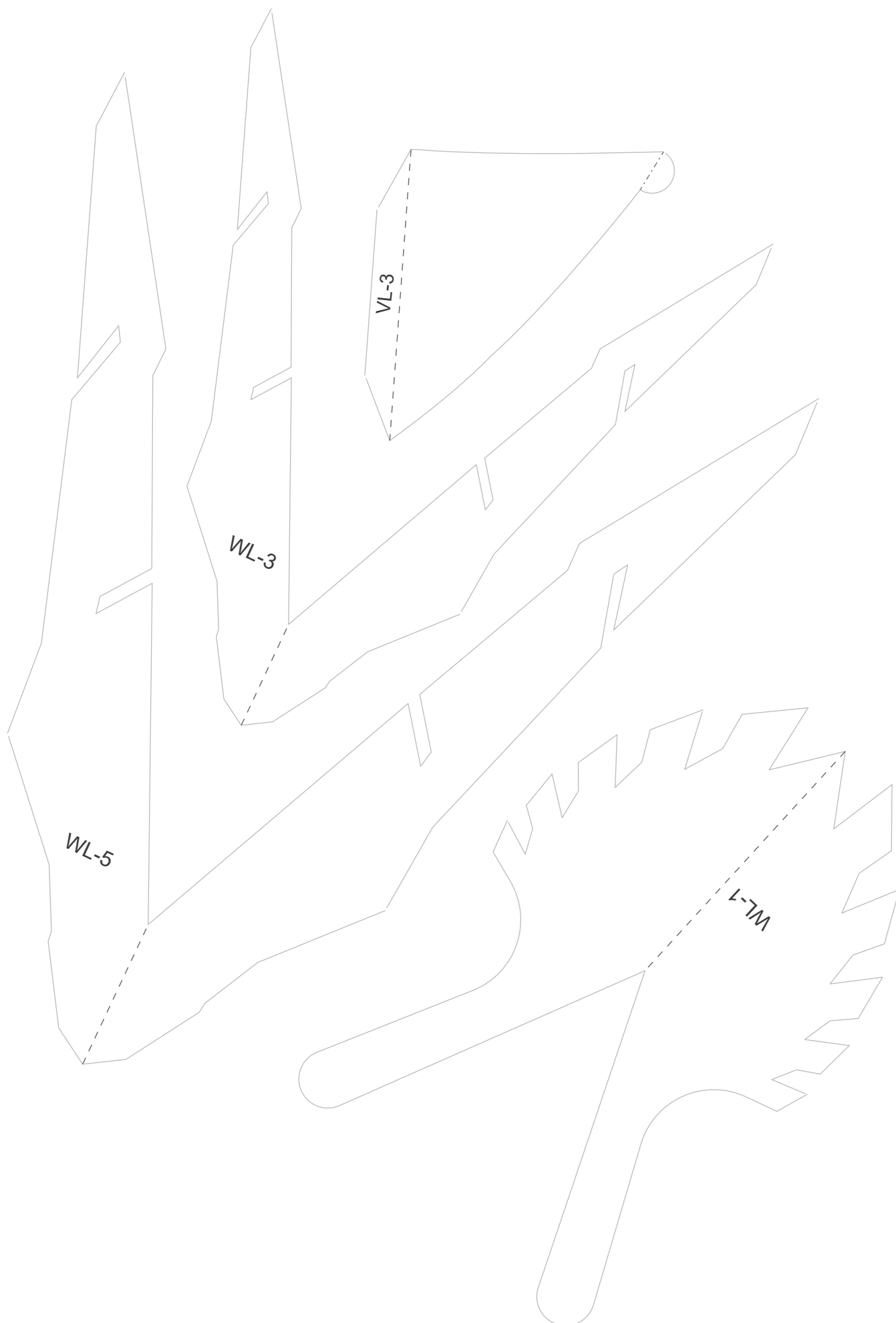


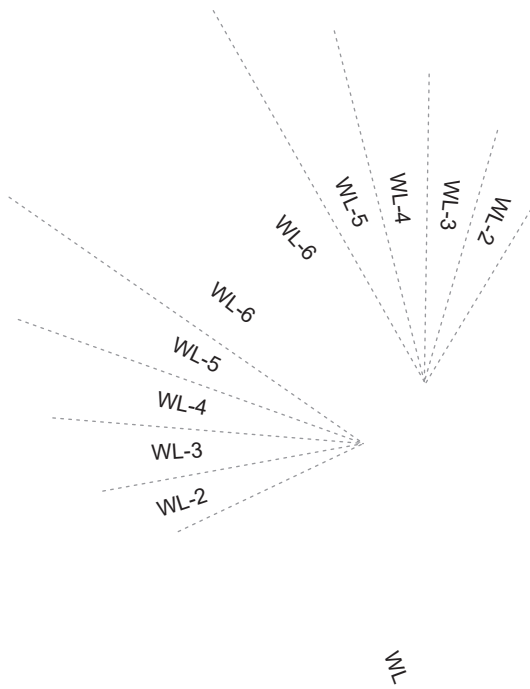
(TR-5)

(TL-5)



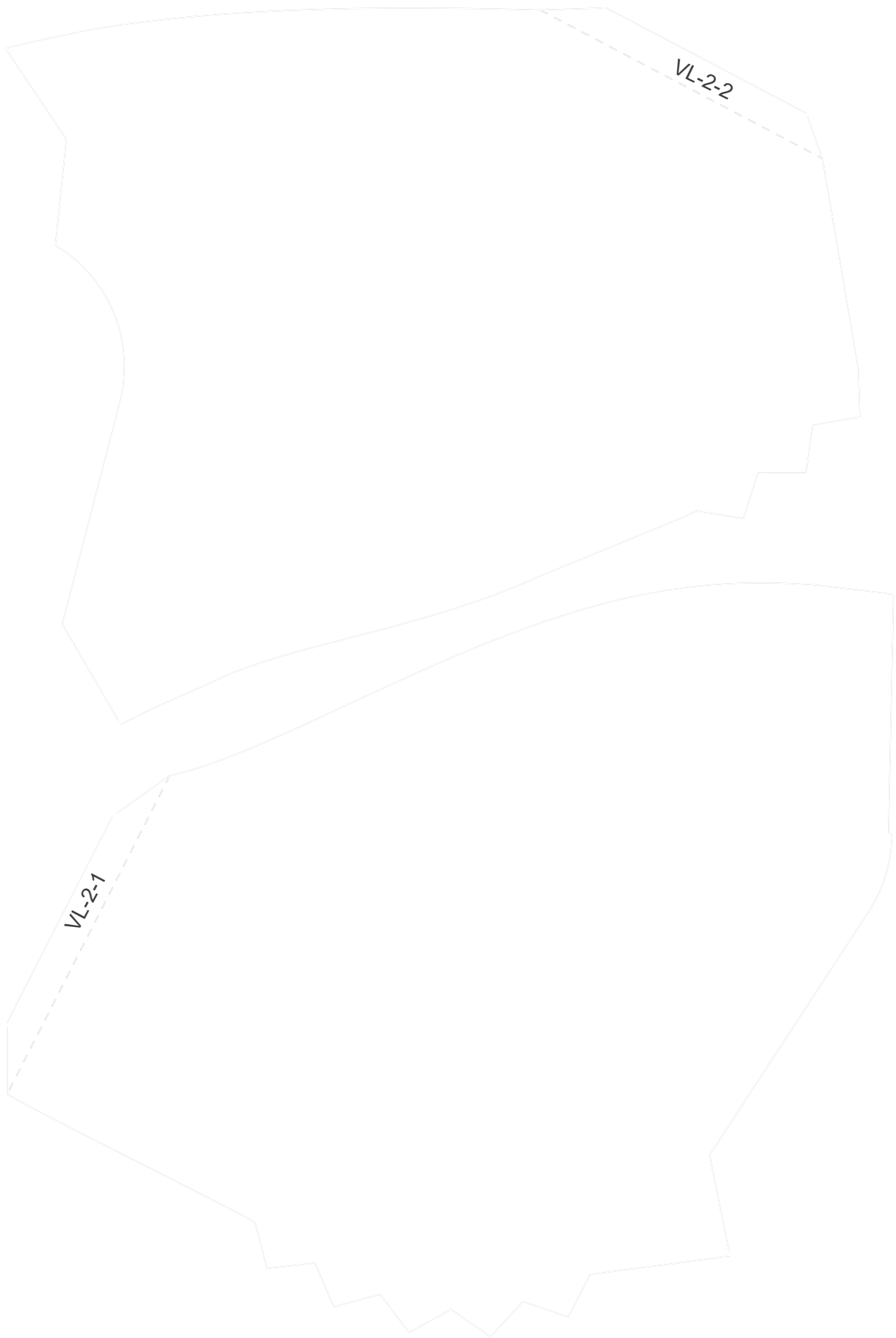




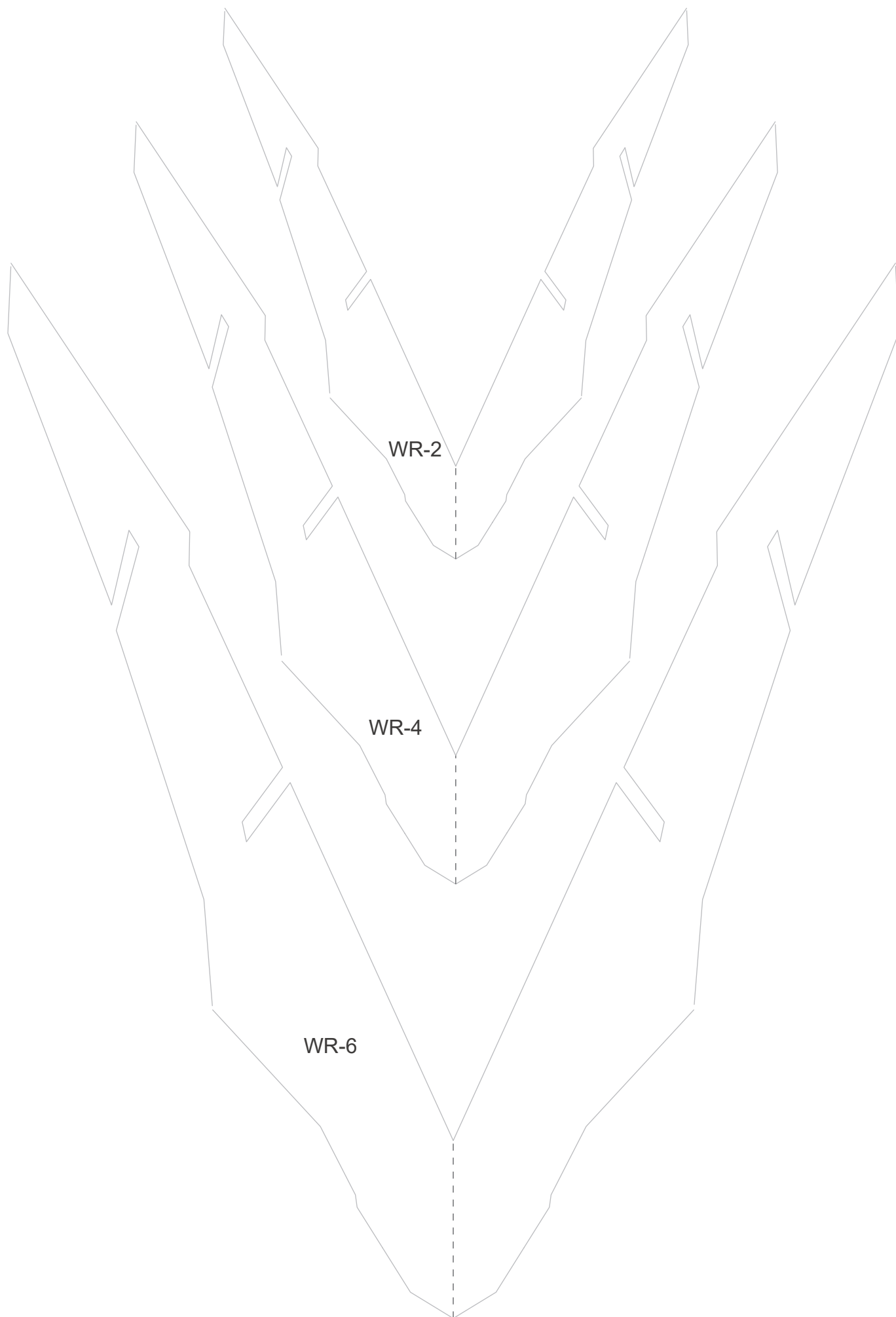


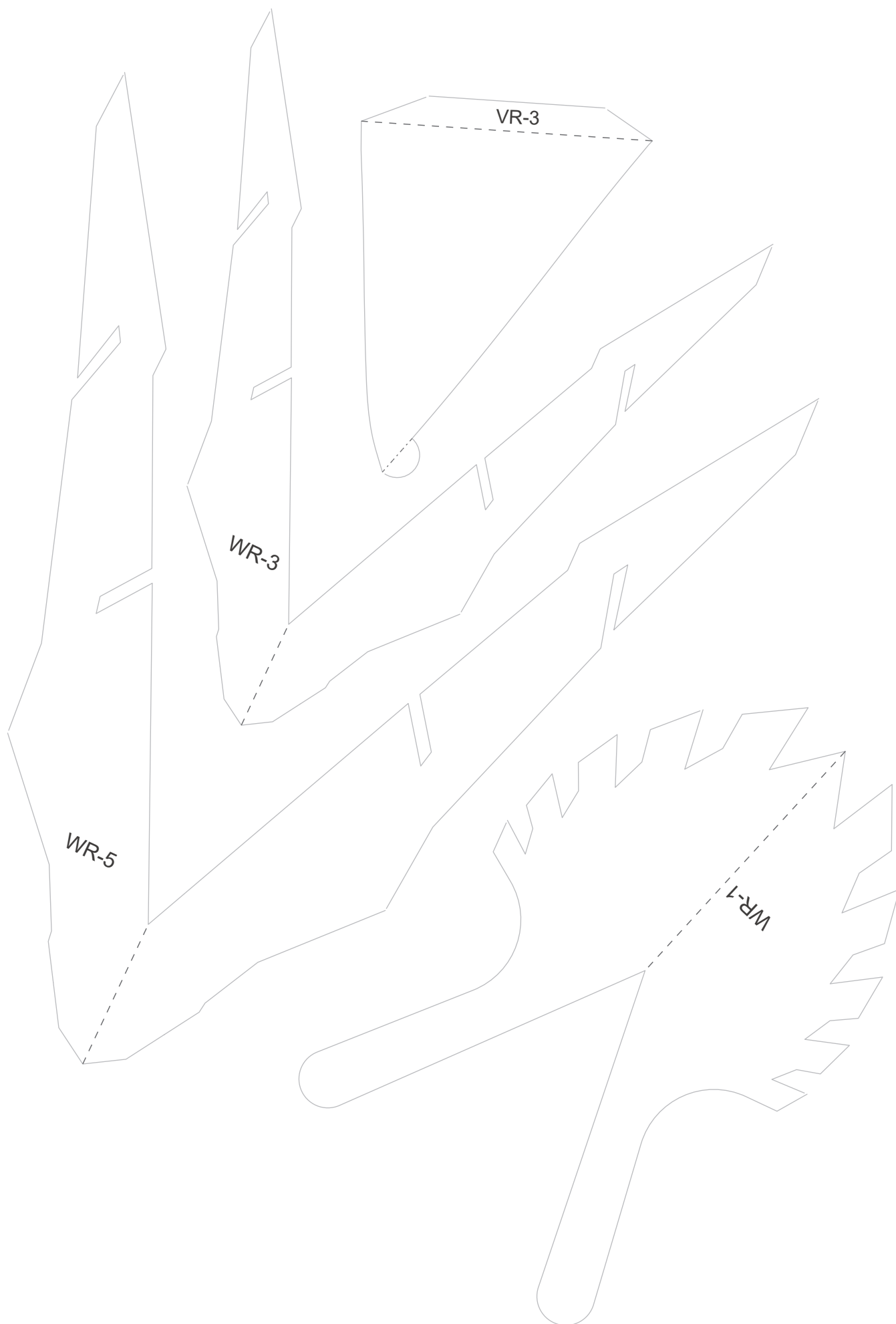


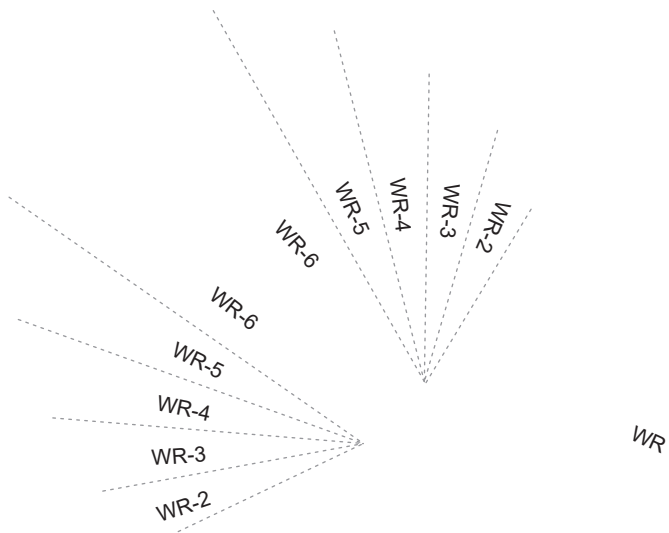
VR-2-2

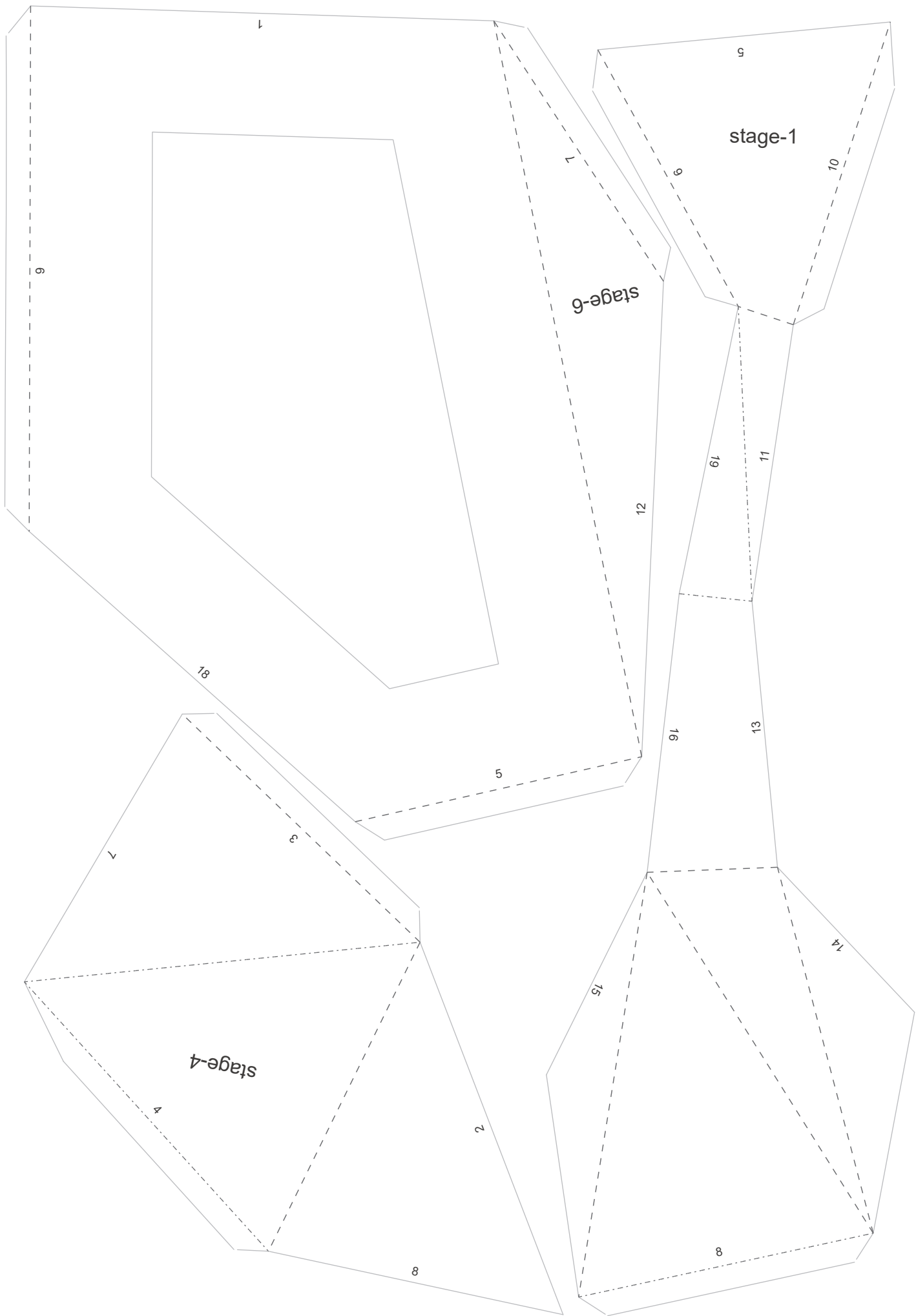


VL-2-2









(A)

